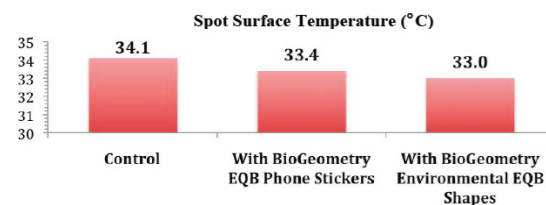


## STUDY SHOWS: BIOGEOMETRY REDUCES HARM FROM MOBILE PHONE RADIATION AS SHOWN BY REDUCED THERMAL EFFECT

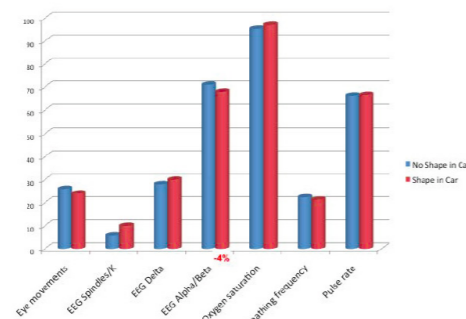


Mobile phone networks operate at frequencies that are located in the region of the electromagnetic spectrum in both microwave radiation and radio frequency radiation levels. Exposure to such radiation through mobile phone usage has a harmful effect due to the absorption of electromagnetic energy by the skin and other living tissues, causing a small temperature rise in those areas.

## STRESS REDUCTION IN AN AUTOMOBILE ENVIRONMENT

There are increased environmental stress factors within a car, especially with regards to electromagnetic stress from the extensive electrical system inside the metal body of the car. Double blind experimentation showed that BioGeometry successfully reduced driver's physiological stress markers as seen using biofeedback measurements. This study was featured in TedxCairo Talks.

**Analysis of Results:** Brainwaves: Increase of Delta indicating relaxation and decrease in alpha/Beta indicating less excitation... Decrease in eye movement and breathing frequency with increased oxygen saturation indicates less stress.



## ENERGY-QUALITY BALANCING OF AIRPLANE ENVIRONMENTS

BioGeometry energy-quality balancing solutions have been implemented on a number of private aircraft to harmonize the increased level of environmental stress associated with flight. Environmental stressors include electromagnetic fields, cosmic radiation, chemicals, and psychological stress. Biofeedback measurements were conducted on the crew using the BioPulsar-Reflexograph biomedical measurement device, which is certified as a medical diagnostic device in Europe. The balance of electrical organ function inside the BioGeometry energy-balanced aircraft significantly surpassed those taken outside the aircraft under normal ground conditions.

## BioGeometry in Architecture



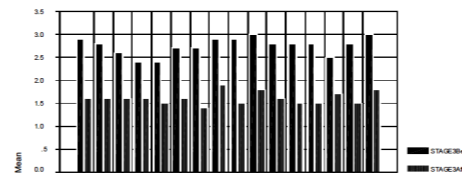
Dr. Ibrahim Karim, being an architect by profession, began his application of BioGeometry energy balancing in architecture. The first BioGeometry projects were in 22 residential units of the first stage of the Old Vic Resort in Hurgada on the Red Sea built in 1984, as well as in Portrait Resort in Sokhna on the Red Sea Gulf of Suez build in 1990. Following were many projects in North America, Europe, and the Arab World. BioGeometry in architecture enhances the energy quality of the user's well being by reducing the effect of all forms of environmental stress resulting from modern technology.

### A House that Protects its Inhabitants

Arch. Ibrahim Karim applied BioGeometry with arch. Pier Paolo Alberghini and Landscape designer James Thompson, to create a home that harnesses the positive energy of the earth. Lucie DuMoulin, La Maison du 21e siecle (translated from French)

## BIOGEOMETRY INTERIOR ARCHITECTURE & ADHD

"A Design Approach Using BioGeometry in Interior Architectural Spaces with Reference to Heal Attention Deficit Hyperactivity Disorder," by Dina Ra'afat Abdul Rahman Howeid, a PHD thesis completed at the Cairo University, Faculty of engineering shows a vast improvement in ADHD criteria tested, including: child focus & attention, communication, dynamic behaviour, behavior, teamwork, independence, hyperity, social stages, academic skills. Criteria mean scores show on the right.



## Clinical Research

BioGeometry is not a form of medical diagnosis or treatment. No medical claims are being made. BioGeometry is a long-term environmental support for the body's energy system and all types of treatment.

### National Research Center, Cairo 1998

Preliminary laboratory studies at the Egyptian National Research Center showed that BioGeometry shapes "have a positive effect on biological functions". This led to the first Egyptian patent in BioGeometry™ at the Ministry of Scientific Research

### NATIONAL VIRUS C PROJECT SUCCESS

Dr. Taha Khalifa, the Dean of the Pharmacology Department at Al-Azhar University, Egypt, publicly announced that the preliminary phase of the comparative National Virus C Project showed that BioGeometry energy-balancing obtained the best results among all other pharmaceutical and alternative remedies. BioGeometry achieved a 90% result, compared to the other remedies, which only achieved results in the 20-30% range. In the case of medical drugs, some achieved around 50% but they could only be used for half the cases in the group who did not show low blood platelet counts.

## BioSignatures

BioSignatures are precisely constructed linear diagrams which have the same exact geometric configurations as specific vital energy patterns within the human body. They are similar to the Chinese peripheral energy meridians of the body, but are related to the energy flow within the geometric configurations of the organs in the human body. They play a major role in "forming" the organs' energy functions. When introduced into the body's surrounding energy field, the BioSignatures are activated by the energy being channeled through them (in a manner similar to electricity activating the printed circuits on a computer chip). The activated BioSignatures then resonate with the corresponding energy patterns in the human body, causing a harmonic amplification that restores the correct energy flow and qualitative balance of that pattern. BioSignatures clear subtle energy blockages and maintain proper flow, as well as introduce the natural energy-balancing BG3 qualities. These corrections are instantaneous on the energy level, but physical manifestations are variable depending on the specific nature of the problem and the underlying energy conditions. A general combination of BioSignatures is used in the General BioSignatures Products.

**"BioGeometry develops, manufactures and markets life products and services to harmonize and balance living space and improve the health of all living beings. Not business as usual but a new way of doing business as unusual based on love, goodness, and joy."**

-Graziella Zanolleti, Director BioGeometry Energy Systems

For more information please visit [www.BioGeometry.com](http://www.BioGeometry.com) or e-mail us at [Info@BioGeometry.com](mailto:Info@BioGeometry.com)

# BIOGEOMETRY®

Dr. I. Karim

**BioGeometry Energy Systems**  
Rue des Pâquis 51  
CH-1201 Genève  
(+41) 792-025-006

**BioGeometry Canada Inc.**  
2001 University, Suite 1700  
Montreal, QC, Canada, H3A2A6  
(+1) 514-228-7505

**BioGeometry Consulting**  
17 Road 11, Maadi  
Cairo, Egypt  
(+20) 10 0-110 -0178

[Info@BioGeometry.com](mailto:Info@BioGeometry.com)  
[www.BioGeometry.com](http://www.BioGeometry.com)



## Dr. Ibrahim Karim, Founder of the Science of BioGeometry

Dr. Karim is a graduate of the prestigious Federal Institute of Technology (ETH), Zurich, Switzerland. Founder of the qualitative science of BioGeometry; the new Architecture and industrial design school that uses the subtle energy effect of geometrical shapes to induce harmony to our modern technological or natural environments. He currently teaches at several universities and supervises numerous postgraduate studies on the applications of the science of BioGeometry. Dr. Karim was recognized and honored by several institutes for his work in the environment and was chosen as man of the year by the Swiss magazine "Anzeiger" in 2005 for his success in reducing the effect of 'electrosmog' in several regions in Switzerland. Dr. Karim held several advisory positions in Egypt to the Ministers of: Health, Culture, Tourism. As a practicing architect he heads his own architecture consulting and industrial design firm.

## INTRODUCTION TO BIOGEOMETRY

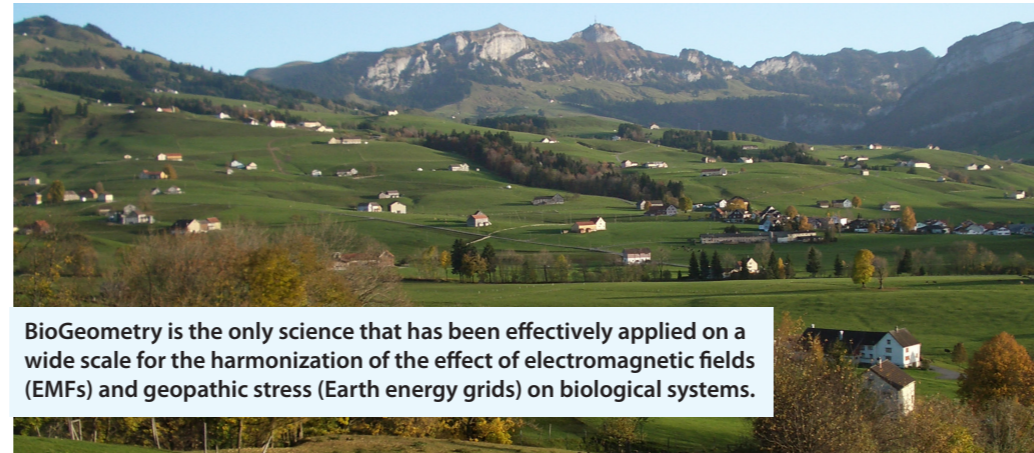
From Egypt, the cradle of civilization, there has emerged a modern science that restores the harmony and subtle energy balance in our lives, our environment and modern technology. This science of BioGeometry encompasses the universal laws and natural dynamics affecting living energy systems, which have been largely ignored in our modern civilization at the expense of our health and well-being. BioGeometry is based on a Physics of Quality, which is the study of the underlying energy-quality information exchange within the resonance and harmonic relationships of energy and shape affecting all living systems. Physics of Quality, in which everything is interconnected in a universal symphony, includes a growing body of knowledge and scientific research that integrates rather than divides our world-view, narrowing the gap between the energy manifestations of science and spirituality.

BioGeometry uses the energy principles of geometrical shapes to balance biological energy systems within the overall framework of environmental energy interactions. BioGeometry was founded by Egyptian Architect and Scientist Dr. Ibrahim S.F. Karim (D.Sc./Dipl. Arch.-ETH, Zurich), and is based on over 40 years of research. Dr. Karim's breakthrough research identified a harmonizing subtle energy quality found in sacred power spots that can be detected through three energy qualities and has thus been labeled BG3 in BioGeometry. The BG3 quality is at the core of harmonic relationships of energy and shape in nature.

In an energy-balanced state everything maintains its proper energy-quality identity, along with its correct polarity (positive or negative charge). Energy interactions that disturb this state create imbalance and this reflected in functional properties. The harmonizing BG3 quality that BioGeometry introduces in an amplified form restores energetic balance within a living energy system and its interactions with the environment.

BioGeometry is an applied science by virtue of its successful applicability in numerous fields. BioGeometry energy-quality balancing solutions are being applied to architecture, telecom networks, industrial design, and vehicles to transmute the effects of environmental energy disturbances from sources such as electromagnetic radiation, structural design, and earth-energy radiation. BioGeometry is also being applied in agriculture and animal farming to increase productivity and quality leading to the reduction of controversial chemicals and artificial treatments. A line of BioGeometry products for individual and home use is also available to offer basic BioGeometry energy-quality balancing as a long-term support system for our well-being.

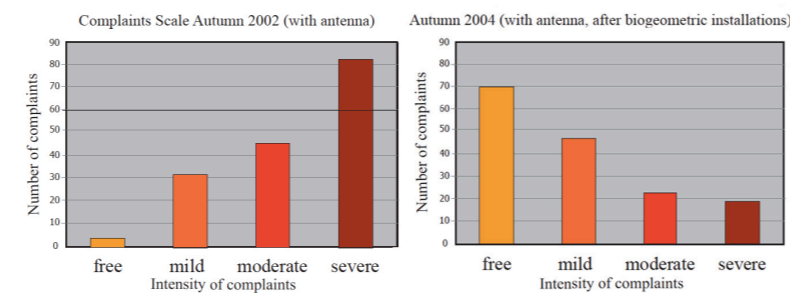
## ENVIRONMENTAL SOLUTION: Electromagnetic Fields



**BioGeometry is the only science that has been effectively applied on a wide scale for the harmonization of the effect of electromagnetic fields (EMFs) and geopathic stress (Earth energy grids) on biological systems.**

## ELECTRO-SMOG: THE MIRACLE OF HEMBERG

A pilot research project under the patronage of the Swiss Mediation Authority for Mobile Communication and Environment (MAMCE) in collaboration with leading governmental telecom provider Swisscom, implemented BioGeometry energy-quality balancing to remedy ailments of electro-sensitivity in the rural town of Hemberg. BioGeometry was successful in eliminating the ailments of electro-sensitivity, among a number of other health conditions that it remedied, as well as positively impacting the overall ecology of the area. Media coverage, supported by official releases by the MAMCE and an independent study of the project, dubbed the results "The Miracle of Hemberg." In a Swiss television interview with the Mayor and residents of Hemberg almost two years later (Sept. 2005), the sustained energy-quality balancing effect of BioGeometry was confirmed.



**Survey Indicates:  
The Complaints Have Been Greatly Reduced**

Survey by: Dr. med. Yvonne Gilli  
\*Charts show a significant shift in total symptoms from strong towards free."  
-Excerpt from "Mobile Radiation in Hemberg" Study

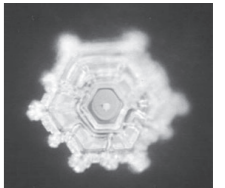
## ELECTRO-SMOG: THE MIRACLE OF HIRSCHBERG

Following the success of the first Swiss BioGeometry project in Hemberg, Dr. Karim was commissioned by the local government of the Swiss town of Hirschberg to implement a similar BioGeometry solution there. The project was documented by Swiss TV Channel 1 (SF1), and the documentary aired on prime-time TV in Switzerland showing the overwhelming positive impact of BioGeometry® energy-quality balancing on the health of the residents and the livestock in the area, which are an important economic factor to this rural town. The documentary referred to the successful project as "Electro-smog: The Miracle of Hirschberg."

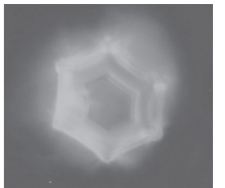
## Quality of Water

### DR. MASURO EMOTO BIOGEOMETRY WATER CRYSTALS

Dr. Masuro Emoto's pioneering research with water crystal photography captivated audiences all over the world when he published his findings in the international best seller "The Message From Water." His work gave the world a glimpse of the influence that the quality of energy and the environment has on water by photographing ice water crystals under different energy conditions. Water impregnated with good energy quality formed beautiful, well-balanced hexagonal water crystals, while water impregnated with bad energy quality produced badly formed and unbalanced crystals. Dr. Emoto's technology transforms energy quality into form and Dr. Karim's BioGeometry uses form to balance energy-quality, and this led to a scientific synergy with amazing results. BioGeometry energy-quality balancing yielded beautiful perfectly structured and balanced water crystals. 70% of our world and our bodies are composed of water, and the energy-quality of that water is a mirror of the quality of our lives.



Water crystal with BG



Standard tap water



Drinking water from the BioGeometry bottle on the right has a positive effect on biological energy functions compared to drinking regular water as seen on Bioenergy devices using Gas Discharge Visualization (Korotkov), BioPulsar Chinese medicine device, and ETAscan/Oberon technology. Other tests on milk freshness and shelf life have shown positive effects.

## Animal Farming & Agriculture

### BIOGEOMETRY INCREASES GROWTH & QUALITY OF POULTRY

A research study carried out by Dr. A Hussein of Suez Canal University and the Ministry of Agriculture implemented BioGeometry energy-balancing solutions in chemical free poultry breeding. The published results showed that BioGeometry was effective in significantly increasing the growth and quality of the chicken as well as lowering the mortality rate.

### APPLE ORCHARDS

A three-year research project at the University of Wageningen, Holland, by Professor Peter Mols on the use of BioGeometry in organic apple agriculture, concluded that BioGeometry was effective in eliminating certain parasites and significantly increasing agricultural yield.

### FRESH WATER CROPS IN SALT WATER

A two-month experiment by the late Eng. Adel Ammar to test the possibility of using BioGeometry to allow fresh water plants (sweet potato) to grow in salt water from the Red Sea showed astonishing results. The control potatoes that were given salt water shriveled by the end of the day, while the BioGeometry treated salt water potatoes budded normally and stayed fresher longer than the sweet potatoes given fresh water.



Salt Water BG3 Salt Water Control